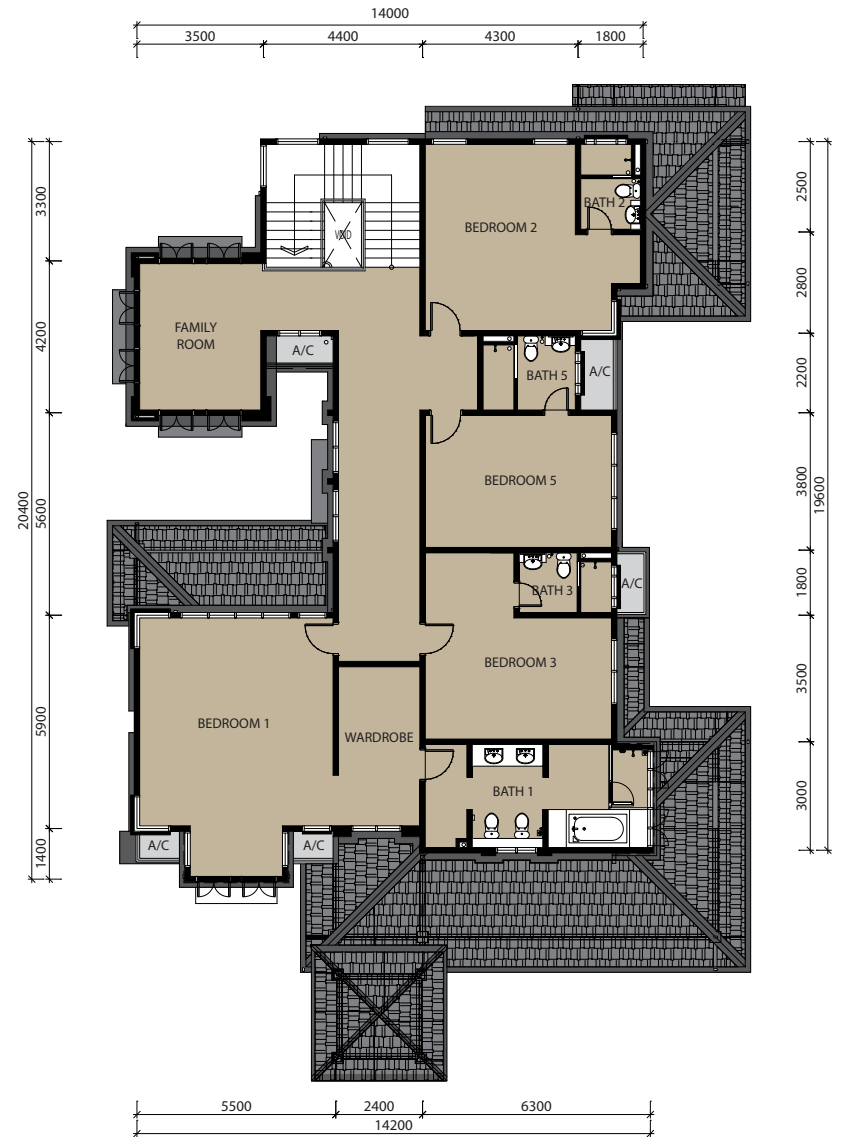


GROUND FLOOR PLAN



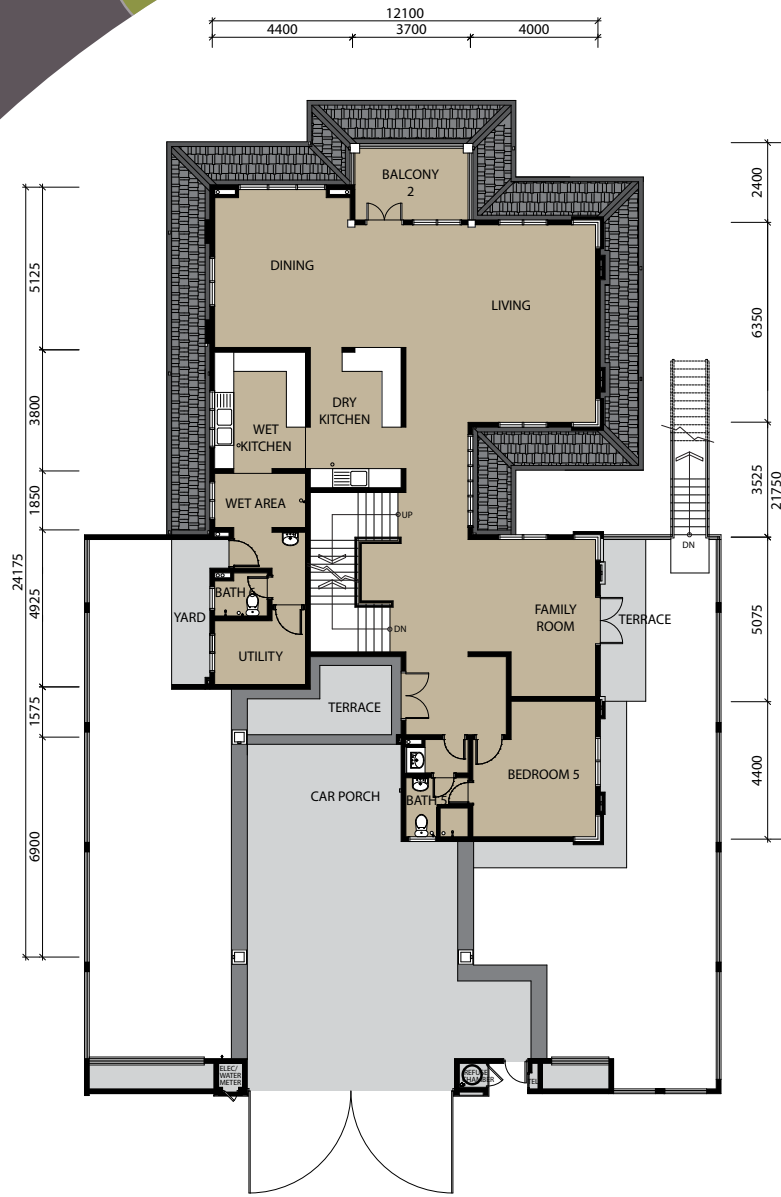
FIRST FLOOR PLAN

type A specification

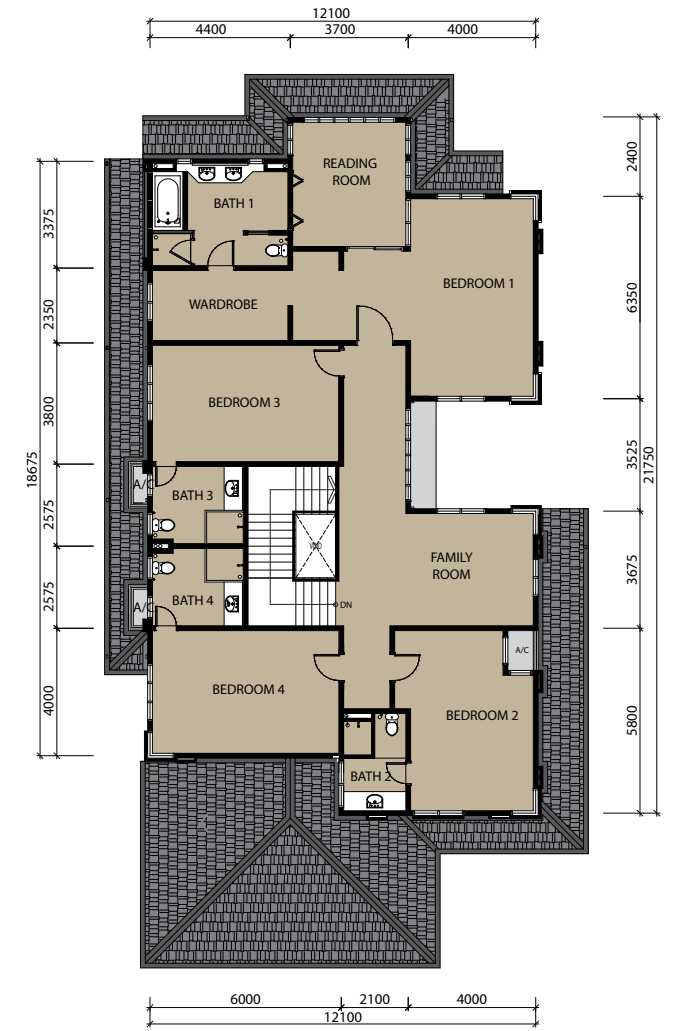
Lot 24

Structure	: Generally reinforced concrete frame	
Wall	: Generally common clay bricks	
Roofing	: Clay roof tiles	
Roof Trusses	: Steel roof trusses	
Ceiling	: Generally plaster ceiling Other - skim coat	
Windows	: Powder coated aluminium windows	
Doors	: Main entrance - Solid decorative timber door All Bedroom & Utility Room - Solid decorative timber doors Kitchen - Solid decorative timber door Terrace and Yard - Solid core waterproof timber doors Bathrooms - Solid core waterproof (single side) timber doors Stores - Plywood flush doors with timber louvered Others - Powder coated aluminium frame glass doors	
Locks	: Quality locksets	
Floor Finishes	: Living & Dining - Porcelain tiles Family Area (Ground floor) - Porcelain tiles Dry & Wet Kitchen, Stores & Yard - Porcelain tiles Bedroom 4 & Utility Room - Porcelain tiles Master bathroom - Marble / Pebble washed Bathrooms (others) - Porcelain tiles All Bedrooms (except Ground floor bedrooms) - Timber flooring Family Area (First floor) - Timber flooring Staircase - Timber flooring Terraces - Homogeneous tiles / Pebble washed Apron - Ceramic tiles / Pebble washed Porch / Driveway - Concrete imprint with pebbles washed border	
Wall Tiles	: Dry Kitchen & Wet Kitchen - 1,500 mm height porcelain tiles Master bathroom - Ceiling height marble with pebble washed feature Bathrooms (others) - Ceiling height porcelain tiles	
Sanitary Installation	: Stainless steel double bowl single drainer sink - 2 nos. WC - 6 nos. Shower point - 6 nos. Wash basin - 7 nos. Bib tap - 7 nos. Whirl pool - 1 no. Soap holder - 6 nos. Paper holder - 6 nos. Garden tap - 1 no.	
Electrical Installation	: Incoming 3-phase 60Amp power supply Lighting point - 57 nos. Power point - 36 nos. Air-cond point - 9 nos. Ceiling Fan point - 10 nos. TV point - 4 nos. Astro point - 4 nos. Telephone point - 4 nos. Heater point - 5 nos. Bell point - 1 no. Gate light point - 2 nos. Auto gate point - 1 no.	
Painting	: Exterior - Weather-shield paint Interior - Emulsion paint	
Fencing	: M.S. grilles and brick wall c/w gate and refuse chamber	
Others	: Automatic gate and alarm system	

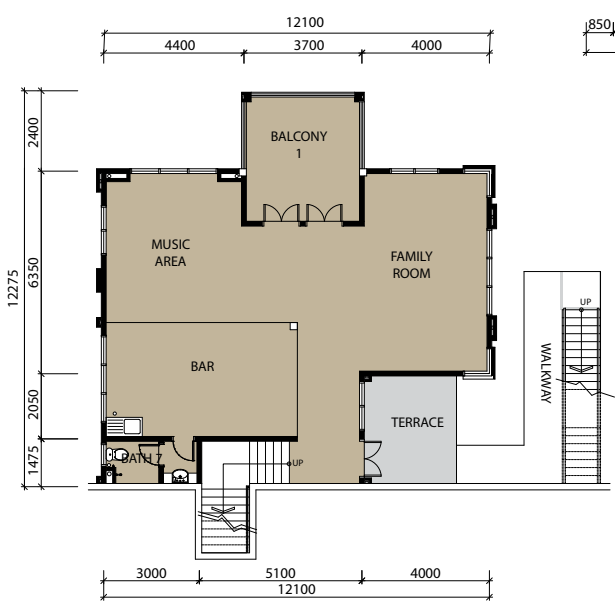
type B
design



GROUND FLOOR PLAN



FIRST FLOOR PLAN



LOWER GROUND FLOOR PLAN

type B specification

Lot 12, 13 & 14

Structure	: Generally reinforced concrete frame
Wall	: Generally common clay bricks
Roofing	: Clay roof tiles
Roof Trusses	: Steel roof trusses
Ceiling	: Generally plaster ceiling Other - skim coat
Windows	: Powder coated aluminium windows
Doors	: Main entrance - Solid decorative timber door All Bedroom & Utility Room - Solid decorative timber doors Kitchen & Terrace - Solid core waterproof timber doors Bathrooms - Solid core waterproof (single side) timber doors Others - Powder coated aluminium frame glass doors
Locks	: Quality locksets
Floor Finishes	: Living & Dining - Porcelain tiles Family Area (Ground & Lower Ground floor) - Porcelain tiles Dry & Wet Kitchen & Yard - Porcelain tiles Bedroom 5 & Utility Room - Porcelain tiles Master area & Bar - Porcelain tiles Master bathroom - Marble / Pebble washed Bathrooms (others) - Porcelain tiles All Bedrooms (except Ground floor bedrooms) - Timber flooring Family area (First floor) & Reading room - Timber flooring Staircase (Ground floor to First Floor) - Timber flooring Staircase (Lower Ground to Ground Floor) - Porcelain tiles Terraces & Balcony - Homogeneous tiles / Pebble washed Apron - Ceramic tiles / Pebble washed Porch / Driveway - Concrete imprint with pebbles washed border

Wall Tiles	: Dry Kitchen & Wet Kitchen - 1,500 mm height porcelain tiles Master bathroom - Ceiling height marble with pebble washed feature Bathrooms (others) - Ceiling height porcelain tiles
-------------------	--

Sanitary Installation	: Stainless steel double bowl single drainer sink - 2 nos. WC - 7 nos. Shower point - 7 nos. Wash basin - 9 nos. Bib tap - 8 nos. Whirl pool - 1 no. Soap holder - 7 nos. Paper holder - 7 nos. Garden tap - 1 no.
------------------------------	--

Electrical Installation	: Incoming 3-phase 60Amp power supply Lighting point - 71 nos. Power point - 37 nos. Air-cond point - 13 nos. Ceiling Fan point - 14 nos. TV point - 5 nos. Astro point - 5 nos. Telephone point - 5 nos. Heater point - 6 nos. Bell point - 1 no. Gate light point - 2 nos. Auto gate point - 1 no.
--------------------------------	---

Painting	: Exterior - Weather-shield paint Interior - Emulsion paint
-----------------	--

Fencing	: M.S. grilles and brick wall c/w gate and refuse chamber
----------------	---

Others	: Automatic gate and alarm system
---------------	-----------------------------------



GROUND FLOOR PLAN



FIRST FLOOR PLAN

type B1 specification

Lot 1, 3, 4, 5, 6, 10 & 11

Structure	: Generally reinforced concrete frame
Wall	: Generally common clay bricks
Roofing	: Clay roof tiles
Roof Trusses	: Steel roof trusses
Ceiling	: Generally plaster ceiling Other - skim coat
Windows	: Powder coated aluminium windows
Doors	: Main entrance - Solid decorative timber door All Bedroom & Utility Room - Solid decorative timber doors Kitchen & Terrace - Solid core waterproof timber doors Bathrooms - Solid core waterproof (single side) timber doors Stores - Plywood flush doors with timber louvered Others - Powder coated aluminium frame glass doors
Locks	: Quality locksets
Floor Finishes	: Living & Dining - Porcelain tiles Family Area (Ground floor) - Porcelain tiles Dry & Wet Kitchen, Stores & Yard - Porcelain tiles Bedroom 5 & Utility Room - Porcelain tiles Master bathroom - Marble / Pebble washed Bathrooms (others) - Porcelain tiles All Bedrooms (except Ground floor bedrooms) - Timber flooring Family area (First floor) & Reading room - Timber flooring Staircase - Timber flooring Terraces - Homogeneous tiles / Pebble washed Apron - Ceramic tiles / Pebble washed Porch / Driveway - Concrete imprint with pebbles washed border

Wall Tiles	: Dry Kitchen & Wet Kitchen - 1,500 mm height porcelain tiles Master bathroom - Ceiling height marble with pebble washed feature Bathrooms (others) - Ceiling height porcelain tiles
-------------------	--

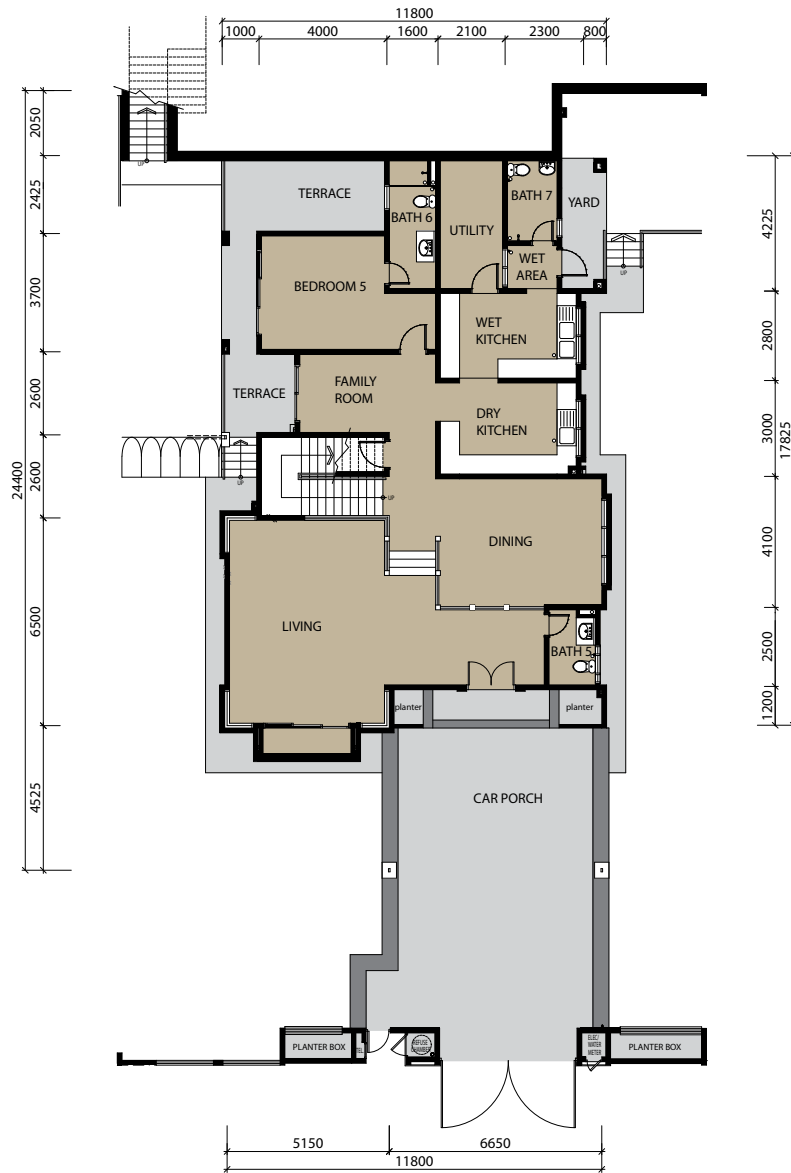
Sanitary Installation	: Stainless steel double bowl single drainer sink - 2 nos. WC - 6 nos. Shower point - 6 nos. Wash basin - 8 nos. Bib tap - 7 nos. Whirl pool - 1 no. Soap holder - 6 nos. Paper holder - 6 nos. Garden tap - 1 no.
------------------------------	--

Electrical Installation	: Incoming 3-phase 60Amp power supply Lighting point - 59 nos. Power point - 31 nos. Air-cond point - 10 nos. Ceiling Fan point - 11 nos. TV point - 4 nos. Astro point - 4 nos. Telephone point - 4 nos. Heater point - 5 nos. Bell point - 1 no. Gate light point - 2 nos. Auto gate point - 1 no.
--------------------------------	---

Painting	: Exterior - Weather-shield paint Interior - Emulsion paint
-----------------	--

Fencing	: M.S. grilles and brick wall c/w gate and refuse chamber
----------------	---

Others	: Automatic gate and alarm system
---------------	-----------------------------------



GROUND FLOOR PLAN



FIRST FLOOR PLAN

type C specification

Lot 15, 16, 17, 18, 19 & 20

Structure	: Generally reinforced concrete frame
Wall	: Generally common clay bricks
Roofing	: Clay roof tiles
Roof Trusses	: Steel roof trusses
Ceiling	: Generally plaster ceiling Other - skim coat
Windows	: Powder coated aluminium windows
Doors	: Main entrance - Solid decorative timber door All Bedroom & Utility Room - Solid decorative timber doors Kitchen & Terrace - Solid core waterproof timber doors Bathrooms - Solid core waterproof (single side) timber doors Stores - Plywood flush doors with timber louvered Others - Powder coated aluminium frame glass doors
Locks	: Quality locksets
Floor Finishes	: Living & Dining - Porcelain tiles Family Area (Ground floor) - Porcelain tiles Dry & Wet Kitchen, Stores & Yard - Porcelain tiles Bedroom 5 & Utility Room - Porcelain tiles Master bathroom - Marble / Pebble washed Bathrooms (others) - Porcelain tiles All Bedrooms (except Ground floor bedrooms) - Timber flooring Family Area (First floor) - Timber flooring Staircase - Timber flooring Terraces & Balcony - Homogeneous tiles / Pebble washed Apron - Ceramic tiles / Pebble washed Porch / Driveway - Concrete imprint with pebbles washed border

Wall Tiles	: Dry Kitchen & Wet Kitchen - 1,500 mm height porcelain tiles Master bathroom - Ceiling height marble with pebble washed feature Bathrooms (others) - Ceiling height porcelain tiles
-------------------	--

Sanitary Installation	: Stainless steel double bowl single drainer sink - 2 nos. WC - 7 nos. Shower point - 7 nos. Wash basin - 8 nos. Bib tap - 8 nos. Whirl pool - 1 no. Soap holder - 7 nos. Paper holder - 7 nos. Garden tap - 1 no.
------------------------------	--

Electrical Installation	: Incoming 3-phase 60Amp power supply Lighting point - 55 nos. Power point - 29 nos. Air-cond point - 8 nos. Ceiling Fan point - 9 nos. TV point - 4 nos. Astro point - 4 nos. Telephone point - 4 nos. Heater point - 6 nos. Bell point - 1 no. Gate light point - 2 nos. Auto gate point - 1 no.
--------------------------------	---

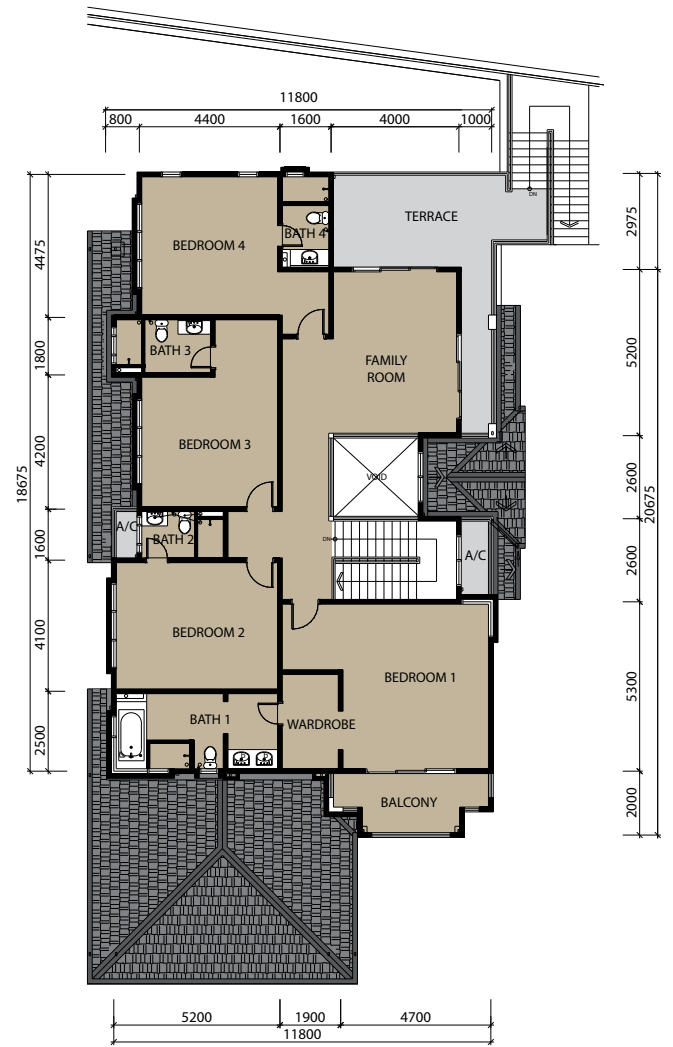
Painting	: Exterior - Weather-shield paint Interior - Emulsion paint
-----------------	--

Fencing	: M.S. grilles and brick wall c/w gate and refuse chamber
----------------	---

Others	: Automatic gate and alarm system
---------------	-----------------------------------



GROUND FLOOR PLAN



FIRST FLOOR PLAN

type C1 specification

Lot 21 & 23

Structure	: Generally reinforced concrete frame
Wall	: Generally common clay bricks
Roofing	: Clay roof tiles
Roof Trusses	: Steel roof trusses
Ceiling	: Generally plaster ceiling Other - skim coat
Windows	: Powder coated aluminium windows
Doors	: Main entrance - Solid decorative timber door All Bedroom & Utility Room - Solid decorative timber doors Kitchen & Terrace - Solid core waterproof timber doors Bathrooms - Solid core waterproof (single side) timber doors Stores - Plywood flush doors with timber louvered Others - Powder coated aluminium frame glass doors
Locks	: Quality locksets
Floor Finishes	: Living & Dining - Porcelain tiles Family Area (Ground floor) - Porcelain tiles Dry & Wet Kitchen, Stores & Yard - Porcelain tiles Bedroom 5 & Utility Room - Porcelain tiles Master bathroom - Marble / Pebble washed Bathrooms (others) - Porcelain tiles All Bedrooms (except Ground floor bedrooms) - Timber flooring Family Area (First floor) - Timber flooring Staircase - Timber flooring Terraces & Balcony - Homogeneous tiles / Pebble washed Apron - Ceramic tiles / Pebble washed Porch / Driveway - Concrete imprint with pebbles washed border

Wall Tiles	: Dry Kitchen & Wet Kitchen - 1,500 mm height porcelain tiles Master bathroom - Ceiling height marble with pebble washed feature Bathrooms (others) - Ceiling height porcelain tiles
-------------------	--

Sanitary Installation	: Stainless steel double bowl single drainer sink - 2 nos. WC - 7 nos. Shower point - 7 nos. Wash basin - 8 nos. Bib tap - 8 nos. Whirl pool - 1 no. Soap holder - 7 nos. Paper holder - 7 nos. Garden tap - 1 no.
------------------------------	--

Electrical Installation	: Incoming 3-phase 60Amp power supply Lighting point - 55 nos. Power point - 29 nos. Air-cond point - 8 nos. Ceiling Fan point - 9 nos. TV point - 4 nos. Astro point - 4 nos. Telephone point - 4 nos. Heater point - 6 nos. Bell point - 1 no. Gate light point - 2 nos. Auto gate point - 1 no.
--------------------------------	---

Painting	: Exterior - Weather-shield paint Interior - Emulsion paint
-----------------	--

Fencing	: M.S. grilles and brick wall c/w gate and refuse chamber
----------------	---

Others	: Automatic gate and alarm system
---------------	-----------------------------------



GROUND FLOOR PLAN



FIRST FLOOR PLAN

type D specification

Lot 2, 7, 8 & 9

Structure	: Generally reinforced concrete frame
Wall	: Generally common clay bricks
Roofing	: Clay roof tiles
Roof Trusses	: Steel roof trusses
Ceiling	: Generally plaster ceiling Other - skim coat
Windows	: Powder coated aluminium windows
Doors	: Main entrance - Solid decorative timber door All Bedroom & Utility Room - Solid decorative timber doors Kitchen & Terrace - Solid core waterproof timber doors Bathrooms - Solid core waterproof (single side) timber doors Stores - Plywood flush doors with timber louvered Others - Powder coated aluminium frame glass doors
Locks	: Quality locksets
Floor Finishes	: Living & Dining - Porcelain tiles Family Area (Ground floor) - Porcelain tiles Dry & Wet Kitchen, Stores & Yard - Porcelain tiles Bedroom 6 & Utility Room - Porcelain tiles Master bathroom - Marble / Pebble washed Bathrooms (others) - Porcelain tiles All Bedrooms (except Ground floor bedrooms) - Timber flooring Family Area (First floor) & Reading room - Timber flooring Staircase - Timber flooring Terraces & Balcony - Homogeneous tiles / Pebble washed Apron - Ceramic tiles / Pebble washed Porch / Driveway - Concrete imprint with pebbles washed border

Wall Tiles	: Dry Kitchen & Wet Kitchen - 1,500 mm height porcelain tiles Master bathroom - Ceiling height marble with pebble washed feature Bathrooms (others) - Ceiling height porcelain tiles
-------------------	--

Sanitary Installation	: Stainless steel double bowl single drainer sink - 2 nos. WC - 8 nos. Shower point - 8 nos. Wash basin - 10 nos. Bib tap - 9 nos. Whirl pool - 1 no. Soap holder - 8 nos. Paper holder - 8 nos. Garden tap - 1 no.
------------------------------	---

Electrical Installation	: Incoming 3-phase 60Amp power supply Lighting point - 64 nos. Power point - 34 nos. Air-cond point - 12 nos. Ceiling Fan point - 13 nos. TV point - 4 nos. Astro point - 4 nos. Telephone point - 4 nos. Heater point - 7 nos. Bell point - 1 no. Gate light point - 2 nos. Auto gate point - 1 no.
--------------------------------	---

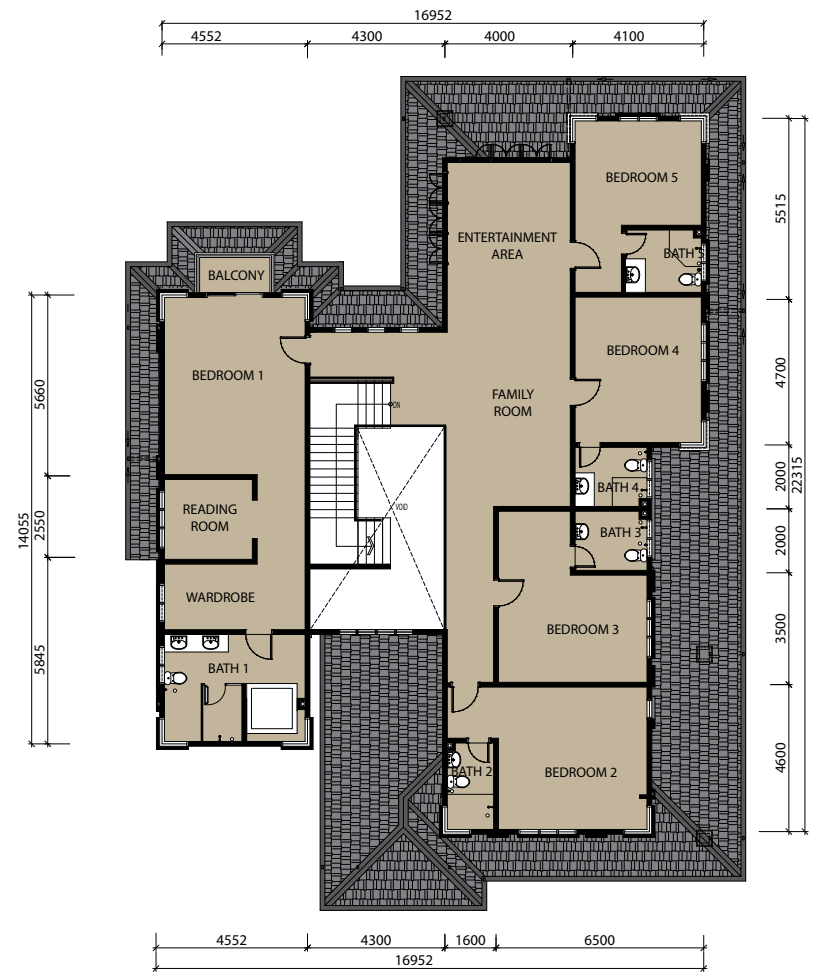
Painting	: Exterior - Weather-shield paint Interior - Emulsion paint
-----------------	--

Fencing	: M.S. grilles and brick wall c/w gate and refuse chamber
----------------	---

Others	: Automatic gate and alarm system
---------------	-----------------------------------



GROUND FLOOR PLAN



FIRST FLOOR PLAN

type D1 specification

Lot 22

Structure	: Generally reinforced concrete frame
Wall	: Generally common clay bricks
Roofing	: Clay roof tiles
Roof Trusses	: Steel roof trusses
Ceiling	: Generally plaster ceiling Other - skim coat
Windows	: Powder coated aluminium windows
Doors	: Main entrance - Solid decorative timber door All Bedroom & Utility Room - Solid decorative timber doors Kitchen & Terrace - Solid core waterproof timber doors Bathrooms - Solid core waterproof (single side) timber doors Stores - Plywood flush doors with timber louvered Others - Powder coated aluminium frame glass doors
Locks	: Quality locksets
Floor Finishes	: Living & Dining - Porcelain tiles Family Area (Ground floor) - Porcelain tiles Dry & Wet Kitchen, Stores & Yard - Porcelain tiles Bedroom & Utility Room - Porcelain tiles Master bathroom - Marble / Pebble washed Bathrooms (others) - Porcelain tiles All Bedrooms (except Ground floor bedrooms) - Timber flooring Family Area (First floor) & Reading room - Timber flooring Staircase - Timber flooring Terraces & Balcony - Homogeneous tiles / Pebble washed Apron - Ceramic tiles / Pebble washed Porch / Driveway - Concrete imprint with pebbles washed border

Wall Tiles	: Dry Kitchen & Wet Kitchen - 1,500 mm height porcelain tiles Master bathroom - Ceiling height marble with pebble washed feature Bathrooms (others) - Ceiling height porcelain tiles
-------------------	--

Sanitary Installation	: Stainless steel double bowl single drainer sink - 2 nos. WC - 8 nos. Shower point - 8 nos. Wash basin - 9 nos. Bib tap - 9 nos. Whirl pool - 1 no. Soap holder - 8 nos. Paper holder - 8 nos. Garden tap - 1 no.
------------------------------	--

Electrical Installation	: Incoming 3-phase 60Amp power supply Lighting point - 60 nos. Power point - 35 nos. Air-cond point - 12 nos. Ceiling Fan point - 12 nos. TV point - 4 nos. Astro point - 4 nos. Telephone point - 4 nos. Heater point - 7 nos. Bell point - 1 no. Gate light point - 2 nos. Auto gate point - 1 no.
--------------------------------	---

Painting	: Exterior - Weather-shield paint Interior - Emulsion paint
-----------------	--

Fencing	: M.S. grilles and brick wall c/w gate and refuse chamber
----------------	---

Others	: Automatic gate and alarm system
---------------	-----------------------------------